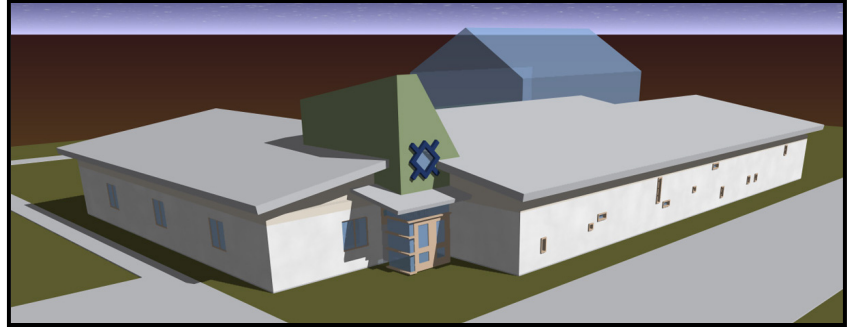
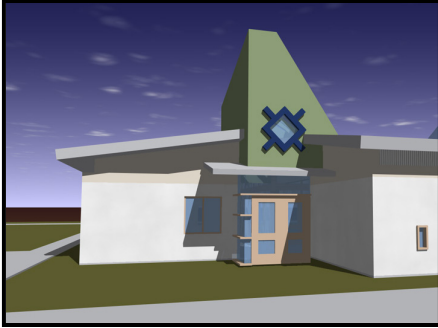




Early Childhood Learning Center

Chief Dull Knife College 2005



Project Description and Location:

The design of this building is currently in progress in a combined effort by AIHI team members at three universities. This project will be a LEED certified Green Building on the campus of Chief Dull Knife College, Northern Cheyenne Reservation, MT.

Intended Use:

This building will provide much needed childcare space for students and staff of Chief Dull Knife College, and at the same time, a chance for young parents to learn about how to best care for their infants and toddlers.

Sustainable Technologies:

The ECLC will feature a healthy and energy efficient design including maximum day lighting, floor radiant heating, and evaporative cooling.

Funding:

This project will be supported by grants from Housing for Urban Development, United States Department of Agriculture

What is a Green Building?

Green Buildings feature energy efficient and feature environmentally friendly materials and systems. They save owners in energy costs, and more importantly, contribute to healthy and productive working and learning environments.

- Students have been found to learn better in green buildings
- Occupants of green buildings have been found to have fewer sick days
- Workers have been found to be more productive in green buildings

How Green is the Early Childhood Development Center?

The LEED rating systems has been developed to assess how buildings can be “sustainable” or “green.” The Early Childhood Development Center is targeted to be LEED Gold.

LEED Rating System

5 categories of criteria for green buildings:

- Sustainable Site Design
- Water Conservation
- Energy Efficiency
- Green and Healthy Materials
- Indoor Air Quality

The LEED Rating System has been developed by the
U.S. Green Building Council
www.usgbc.org



Early Childhood Learning Center *Green and Sustainable Technologies*

Strawbale construction

Rain water catchment and recycling

Evaporative cooling system

Day lighting and solar strategies

Low VOC finishes and furnishings

Grey water treatment

Summer 2005 Blitz-Build Schedule

Week 1: June 26-July 2 – Straw bale raising

Week 2: July 3- July 9 – Stucco madness

Week 3: July 10- July 16 – Finishes and Sitework